



the
seasoned
spoon



December 7th, 2020

As many of you will already know, there is a vibrant sustainable agricultural network on the Trent Symons campus that encompasses vegetable gardens, beehives, community growing spaces and a café. These spaces bring together students, faculty and community members to offer high quality student employment, volunteer experiences, and curriculum-linked learning opportunities.

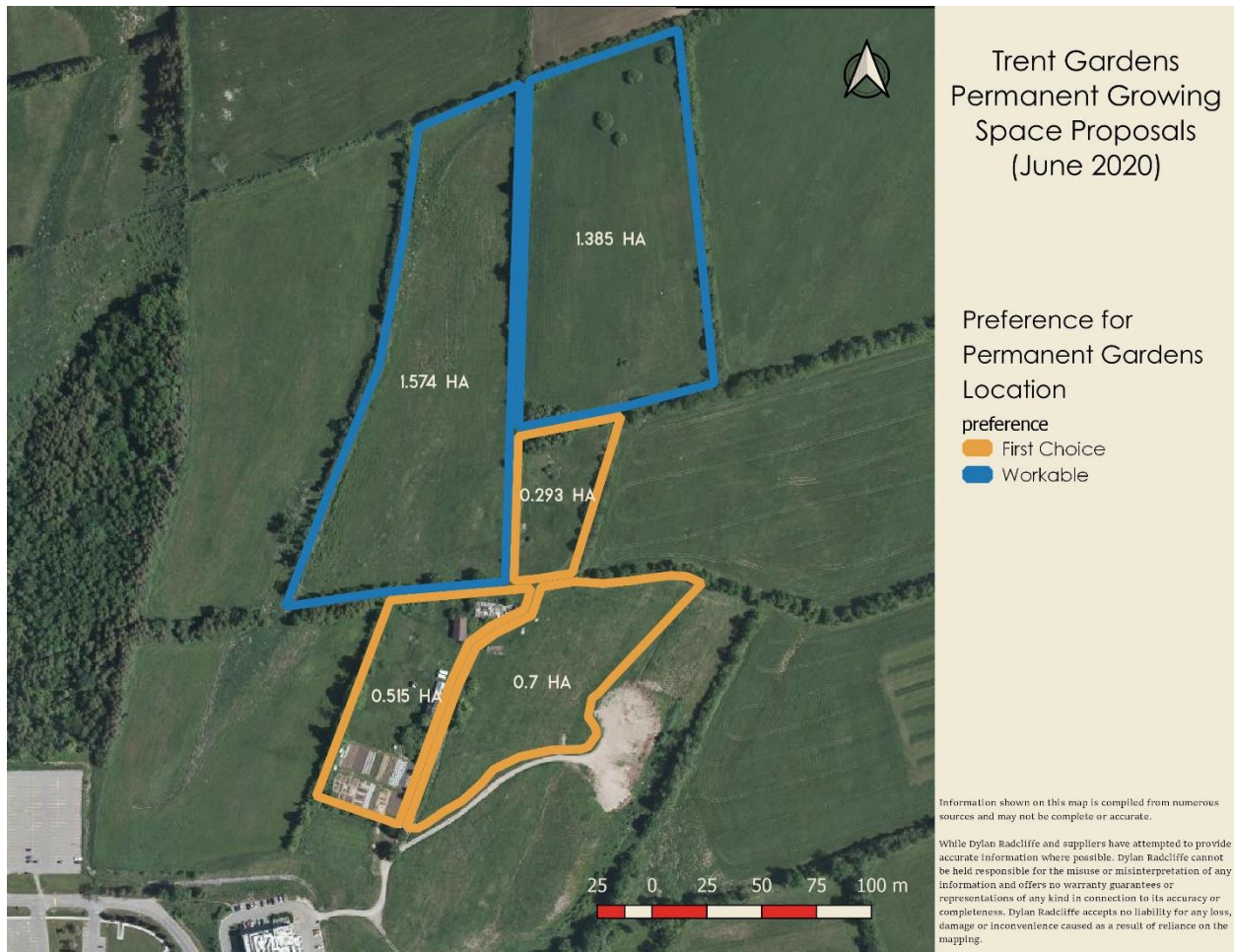
Two of these organizations, the Seasoned Spoon and Trent Vegetable Gardens (TVG) have a long history of collaboration and partnership. For nearly two decades the Seasoned Spoon (seasonedspoon.ca) has offered local, organic and vegetarian food to students at affordable prices, while offering engaging educational and employment opportunities. For the vast majority of this time, the Spoon and TVG have worked to develop a sustainable farm to table model providing high quality, local food to the Trent Symons campus. But, this long-standing partnership represents just two of multiple student levy-funded groups which make up the dynamic ecosystem of food-centered projects happening on campus.

The Trent Market Garden began in 2014 and has benefited from many students' hard work and dedication. It is an experiential learning environment that is operated in partnership with the Sustainable Agriculture and Food Systems Society (SAFSS) and the School of the Environment. Located on Trent's Experimental Farm, the Trent Market Garden is a student-led social enterprise that utilizes holistic, and agro-ecological practices. It allows students and staff to nurture research opportunities and ecological stewardship, and community members are able to purchase its campus-grown produce at the Peterborough Regional Farmers' Market.

Trent Apiary is an on-campus beekeeping project that began as an undergraduate thesis project. The Apiary maintains several beehives on-campus, allowing students to gain hands-on beekeeping experience while studying at Trent. Trent Apiary runs seminars, workshops and provides experiential learning to the community on topics such as pollinator health, honeybee biology, and best management practices for beekeeping. The Apiary produces honey to sell back to students, staff and community members to fund hive maintenance.

Trent University has long been a supporter of agricultural activities on campus and of the work of our respective groups. We are excited by the University's commitment to campus agriculture

and look forward to strengthening our partnership with Trent’s School of the Environment to enhance opportunities for students to build food literacy and engage in sustainable agricultural practices. We are writing to you today to ensure that sustainable campus agriculture is represented in the Trent Land and Nature Areas Plan. The Lands Plan offers us a unique opportunity to build on what already exists. To ensure that our gardens are accessible, we believe the ideal location for student food production is northeast of the DNA building, the TVG’s current field garden space and adjacent fields to the north, as seen here:



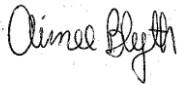
We have been privileged to take part in planning discussions over the past year and are grateful to have the opportunity to make our needs and concerns known. Considering that our garden spaces may be affected by unresolved development decisions in the medium to long-term, we request the following:

- The TVG remains in its current location with space provided for the Trent Market Garden and Trent Apiary in the fields north of the TVG plot (see diagram above). We consider proximity to campus and accessibility for students to be of utmost importance to our operations.
- We request that road grading and buffering information be shared openly with our group for the impact zone of the West-to-East Cleantech Commons road.

- We request that efforts be made to minimize the impacts of future construction or road developments in proximity to this space.
- We request that timelines for construction set to impact our space be communicated with us with as much notice as possible.
- We request that physical representation of the field garden boundaries be made on official TLNAP maps circulated to the public. It is important to us that plans for construction and resulting displacement be communicated openly and explicitly with the Trent community.
- We ask for the Lands Plan committee to foster collaborative consultation between Trent's community of stakeholder groups that are expressing a need to share information and concerns. This could be done in steps, starting with an extension of the January 4th feedback deadline.

If you would like to set up a meeting to discuss this feedback, or if you would like further clarification, please don't hesitate to be in touch. We look forward to hearing back from you and to continuing to work together to develop vibrant agricultural spaces on campus.

Respectfully,



Aimee Blyth,
Seasoned Spoon Executive Director



Brazil Gaffney-Knox
The Trent Apiary



Emma Macdonald,
Trent Vegetable Gardens Coordinator



Matt Dutry
Sustainable Agriculture and Food Systems
Society Finance Officer



Kohl Kuntz
Trent Market Garden Manager